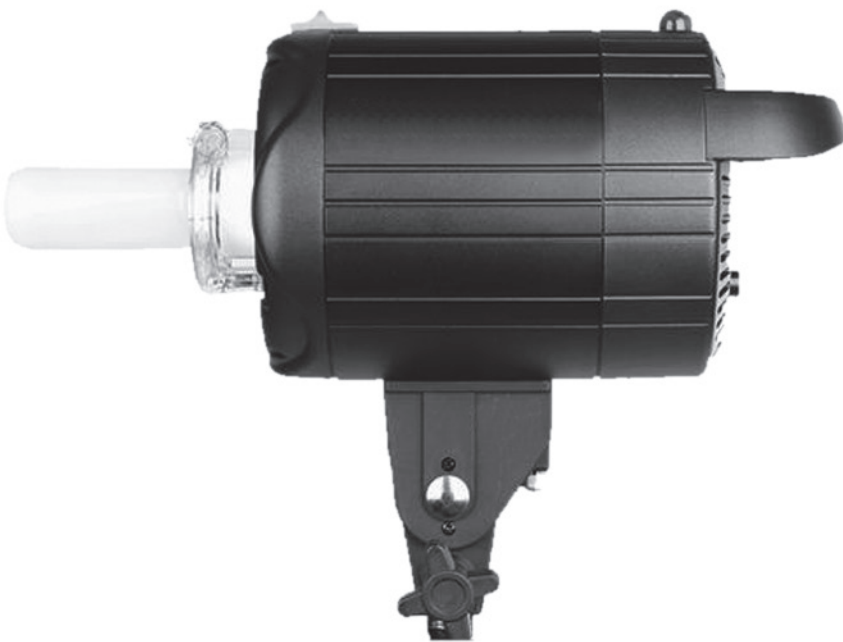




**BRESSER**<sup>®</sup>  
PHOTOSTUDIO EQUIPMENT



Studioblitz · Studio flash  
Flash de studio · Flash de estudio

**BRM-200AM/250AM/300AM/400AM/500AM**

Art. No. F003215 · F003216

**EN** Instruction Manual

# Contents

<b>1</b>	<b>About this Instruction Manual .....</b>	<b>3</b>
<b>2</b>	<b>Intended Use .....</b>	<b>3</b>
<b>3</b>	<b>Parts overview and scope of delivery .....</b>	<b>3</b>
<b>4</b>	<b>Setting up power supply .....</b>	<b>4</b>
<b>5</b>	<b>Select modeling light mode .....</b>	<b>4</b>
<b>6</b>	<b>Setting the modeling light brightness .....</b>	<b>4</b>
<b>7</b>	<b>Setting the flash power .....</b>	<b>4</b>
<b>8</b>	<b>Flash test triggering .....</b>	<b>4</b>
<b>9</b>	<b>Flash synchronization and red-eye reduction .....</b>	<b>4</b>
<b>10</b>	<b>Switching on/off the acoustic signal .....</b>	<b>5</b>
<b>11</b>	<b>Fan .....</b>	<b>5</b>
<b>12</b>	<b>Overheating protection .....</b>	<b>5</b>
<b>13</b>	<b>Fuse replacement .....</b>	<b>5</b>
<b>14</b>	<b>Technical data.....</b>	<b>5</b>
<b>15</b>	<b>EC Declaration of Conformity .....</b>	<b>6</b>
<b>16</b>	<b>Warranty .....</b>	<b>6</b>

# 1 About this Instruction Manual



## NOTICE

**These operating instructions are to be considered a component of the device.**

Please read the safety instructions and the operating instructions carefully before use.

Keep these instructions for renewed use at a later date. When the device is sold or given to someone else, the instruction manual must be provided to the new owner/user of the product.

## 2 Intended Use

- This device is not intended for use by individuals (including children) with limited physical, sensory or mental capabilities or those lacking in experience and/or knowledge, unless they are supervised by an individual responsible for their safety or have received instructions from them regarding the use of the device.
- This product is intended only for private use.
- The device is intended only for indoor use.

## 3 Parts overview and scope of delivery



Illustration 1: Flash device parts overview

1 Photo cell	2 Device housing
3 Clamping lever (Accessories mounting ring)	4 Fixing wire (flash tube)
5 Flash tube	6 Modeling lamp
7 Slot (S bayonet connection)	8 Rod connection (reflecting umbrella)
9 Fixing screw (tripod connection)	10 Tripod connection
11 Clamping screw (tilt head)	12 Fuse compartment
13 C13 mains socket	14 Transport/Carrying handle
15 LAMP-UP key	16 LAMP key

17 On/Off switch	18 LAMP-DOWN key
19 FLASH-DOWN key	20 TEST key
21 Fixing screw (rod connection)	22 SOUND key
23 FLASH-UP key	24 SYNC connection socket
25 CELL key	26 Indicator light (1-5) (flash synchronization)
27 Display	28 C13 power cable with Euro-plug

## 4 Setting up power supply

1. Put the C13 coupling of the power cable into the C13 socket of the flash device.
2. Put the Euro-plug of the power cable into the wall socket (230V maximum voltage).
3. Move ON/OFF switch to position 'I' to turn on the device.

## 5 Select modeling light mode

1. Press LAMP key several times to set one of the following functions. The selected function will be indicated by the indicator light, lighting up above or below the key.
  - **Free:** The modeling light power can be adjusted independently from the flash power. The indicator light below the LAMP key lights.
  - **Prop:** The modeling light power can be adjusted only in dependence to the flash power. The indicator light above the LAMP key lights.
2. Press LAMP key several times until none of the indicator lights and the modeling light is turned off completely.

## 6 Setting the modeling light brightness

1. Press LAMP-UP key or LAMP-DOWN key to change the value for the modeling light brightness.

**NOTICE! The setting range is between 1.0 and 6.0, whereby 1.0 is the lowest and 6.0 is the highest value.**

## 7 Setting the flash power

1. Press FLASH-UP key or FLASH-DOWN key to change value for the flash power.

**NOTICE! The setting range is between 1.0 and 6.0, whereby 1.0 is the lowest and 6.0 is the highest value.**

2. During the flash charging process, the indicator above the TEST key will not light. If the indicator lights, the flash is ready for use.

## 8 Flash test triggering

1. Press TEST key to trigger the flash once.
2. During the flash charging process, the indicator above the TEST key will not light.
3. If the indicator lights, the flash is ready for use.

## 9 Flash synchronization and red-eye reduction

1. Press CELL key several times to set one of the following functions. The selected function will be indicated by the indicator light, lighting up next to the appropriate digit (1, 2, 3, 4 or 5).
  - Single synchronous flashing (1)
  - Synchronous flashing with single pre-flash (red-eye reduction) (2)

- Double synchronous flashing (3)
  - Triple synchronous flashing (4)
  - Quadruple synchronous flashing (5)
2. Press CELL key several times until none of the indicators lights to disable all functions.

## 10 Switching on/off the acoustic signal

Press SOUND key several times to switch the acoustic signal on or off. Once the acoustic signal has been activated, the indicator light above the SOUND key lights up. If the acoustic signal has been disabled, the indicator will not light.

## 11 Fan

The temperature inside the housing is regulated automatically by the fan. If the temperature rises above the permissible maximum, the fan will be activated automatically.

## 12 Overheating protection

If the inner temperature is above the permissible maximum for a longer time, the overheating protection will be activated. The fuse will break and all functions will be disabled. Take the following actions:

1. Disconnect the device from the power supply and let it cool down (45 min. minimum).
2. Replace the fuse (see "Fuse replacement").

**NOTICE! If an overheating of the device occurs more often, the device might be defective. In this case, it is necessary to contact the customer service.**

## 13 Fuse replacement

1. Disconnect the device from the power supply and let it cool down (45 min. minimum).
2. Carefully open the fuse compartment with a suitable slot screwdriver.
3. Pull the fuse holder out of the shaft.
4. Remove the defective fuse.
5. Insert the new fuse into the holder.

**NOTICE! Use clean cotton gloves or a clean cloth when replacing the fuse.**

6. Push the fuse holder back into the slot and press it in.

## 14 Technical data

Model	BRM-200AM	BRM-250AM	BRM-300AM	BRM-400AM	BRM-500AM
Flash power	200Ws	250Ws	500Ws	400Ws	500Ws
Guide number	50	53	56	65	70
Flash charging time	0.5-1 sec.	0.5-1 sec.	0.5-1 sec.	0.5-1.5 sec.	0.5-1.8 sec.
Power range	adjustable in 6 steps from 1/32 to 1/1				
Modeling lamp	Halogen, 150W				
Flash tube	pluggable version; replaceable by user				
Colour temperature	5,600K				
photo cell operation range	up to approx. 10m				
Flash duration	1/1000 sec. to 1/2000 sec.				
Overheating protection	Yes				
Fan	Yes				

Model	BRM-200AM	BRM-250AM	BRM-300AM	BRM-400AM	BRM-500AM
Operating voltage	AC 220V - 240V at 50Hz; AC 110V - 130V at 60Hz				
Fuse	T8/250V microfuse (5x20mm), 6.3A				
Operating conditions	dry, 0° C to +40° C				
Storage conditions	dry and dust-free, 0° C to +40° C				

Table 1: BRM Series

**NOTICE! The technical specifications for the flash tube refer to tests with a Hyman flash tube, produced in Germany. If using other flash tubes, the real values of this information may differ. The information on charging times refer to tests with a voltage of 220V. If using other voltage values, the charging times may differ.**

## 15 EC Declaration of Conformity



Folux B.V. has issued a "Declaration of Conformity" in accordance with applicable guidelines and corresponding standards.

## 16 Warranty

The regular guarantee period is 2 years and begins on the day of purchase. To benefit from an extended voluntary guarantee period as stated on the gift box, registration on our website is required.

You can consult the full guarantee terms as well as information on extending the guarantee period and details of our services at [www.bresser.de/warranty\\_terms](http://www.bresser.de/warranty_terms).



# Service

## DE AT CH BE

Bei Fragen zum Produkt und eventuellen Reklamationen nehmen Sie bitte zunächst mit dem Service-Center Kontakt auf, **vorzugsweise per E-Mail**.

**E-Mail:** [service.pse@bresser.de](mailto:service.pse@bresser.de)  
**Telefon\*:** +49 28 72 80 74 340

BRESSER GmbH  
Kundenservice PSE  
Gutenbergstr. 2  
46414 Rhede  
Deutschland

\*Lokale Rufnummer in Deutschland (Die Höhe der Gebühren je Telefonat ist abhängig vom Tarif Ihres Telefonanbieters); Anrufe aus dem Ausland sind mit höheren Kosten verbunden.

## GB IE

Please contact the service centre first for any questions regarding the product or claims, **preferably by e-mail**.

**e-mail:** [service@bresseruk.com](mailto:service@bresseruk.com)  
**Telephone\*:** +44 1342 837 098

BRESSER UK Ltd  
Unit 1 starborough Farm,  
Starborough Road, Nr Marsh Green,  
Edenbridge, Kent TN8 5RB  
Great Britain

\*Number charged at local rates in the UK (the amount you will be charged per phone call will depend on the tariff of your phone provider); calls from abroad will involve higher costs.

## FR BE

Si vous avez des questions concernant ce produit ou en cas de réclamations, veuillez prendre contact avec notre centre de services **(de préférence via e-mail)**.

**e-mail:** [sav@bresser.fr](mailto:sav@bresser.fr)  
**Téléphone\*:** 00 800 6343 7000

BRESSER France SARL  
Pôle d'Activités de Nicopolis  
260, rue des Romarins  
83170 Brignoles  
France

\*Prix d'un appel local depuis la France ou Belgique

## NL BE

Als u met betrekking tot het product vragen of eventuele klachten heeft kunt u contact opnemen met het service centrum **(bij voorkeur per e-mail)**.

**e-mail:** [info@folux.nl](mailto:info@folux.nl)  
**Teléfono\*:** +31 528 23 24 76

Folux B.V.  
Smirnoffstraat 8  
7903 AX Hoogeveen  
Nederlands

\*Het telefoonnummer wordt in het Nederland tegen lokaal tarief in rekening gebracht. Het bedrag dat u per gesprek in rekening gebracht zal worden, is afhankelijk van het tarief van uw telefoon provider; gesprekken vanuit het buitenland zullen hogere kosten met zich meebrengen.

## ES IT PT

Si desea formular alguna pregunta sobre el producto o alguna eventual reclamación, le rogamos que se ponga en contacto con el centro de servicio técnico **(de preferencia por e-mail)**.

**e-mail:** [servicio.iberia@bresser-iberia.es](mailto:servicio.iberia@bresser-iberia.es)  
**Teléfono\*:** +34 91 67972 69

BRESSER Iberia SLU  
c/Valdemorillo,1 Nave B  
P.I. Ventorro del cano  
28925 Alcorcón Madrid  
España

\*Número local de España (el importe de cada llamada telefónica dependen de las tarifas de los distribuidores); Las llamadas des del extranjero están ligadas a costes suplementarios.